

SAMPLE LEGAL NOTICES

Map Pricing

The space occupied by the map should be calculated as tabular lines. The number of tabular lines per inch depends on your paper's type size and leading. Measure the number of lines per inch in a text notice printed in your paper. Most legal sections print between 8 and 12 lines per inch. Measure the map after it is

printed to determine its height in inches. Multiply the height by your paper's lines per inch to determine the number of tabular lines occupied by the map, then multiply it by the number of columns and the insertion rate.

(Map's height in inches) x (# Lines per inch) x (# Columns) x (Legal rate per tabular line)

HOW TO CALCULATE COST:

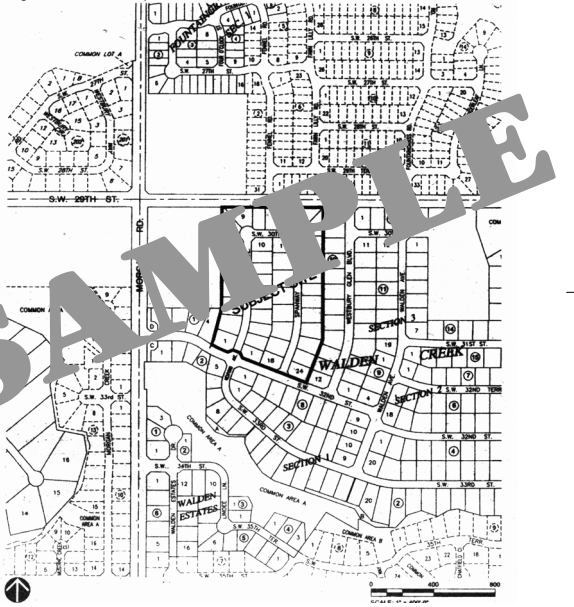
The following example is based on a two-column ad.

(Published in Newspaper Name on Date)

NOTICE OF HEARING
C-5449

NOTICE IS HEREBY GIVEN, that a Final Plat of Walden Creek, Section 4 has been filed on the following described property:

A part of the Northwest Quarter of Section 13, Township 11 North, Range 5 West of the Indian Meridian, Oklahoma City, Canadian County, Oklahoma. Proposed Use: 42 single family lots on 16.60 acres.



No Charge
2 tab lines x
2 col @ 70¢ = 2.80
21 words x
15¢ = 3.15
3 tab lines x
2 col @ 70¢ = 4.20

3.25" @
9 lines per inch
x 2 col @ 70¢
= 40.95

The number of lines per inch in this sample was determined using the method described in the "Map Pricing" section above.

248 words
x 15¢
= 37.20

1 tab line x
2 col @ 70¢ = 1.40

TOTAL COST

1ST INSERTION

2 tabular lines x 2-Col. @ 70¢ = 2.80
21 words x 15¢ = 3.15
3 tabular lines x 2-Col. @ 70¢ = 4.20
MAP: 3.25" @
9 lines/inch x 2-Col @ 70¢ = 40.95
248 words x 15¢ = 37.20
1 tabular line x 2-Col. @ 70¢ = 1.40

Total\$89.70

2ND INSERTION (if required)

2 tabular lines x 2-Col. @ 65¢ = 2.60
21 words x 14¢ = 2.94
3 tabular lines x 2-Col. @ 65¢ = 3.90
MAP: 3.25" @
9 lines/inch x 2-Col @ 65¢ = 38.03
248 words x 14¢ = 34.72
1 tabular line x 2-Col. @ 65¢ = 1.30

Total\$83.49

TOTAL:
\$173.19

A PUBLIC HEARING will be held by the Oklahoma City Planning Commission at 1:30 p.m. on Thursday, October 14, 2011, in the Council Chambers, Third Floor, Municipal Building, 200 North Walker Avenue, Oklahoma City, Oklahoma.

All property owners in the immediately surrounding areas are hereby given notice that they may inspect said application in the office of the Oklahoma City Planning Commission, 420 W. Main, Suite 910. Any argument and evidence for or against the approval of said application should be filed with the City Planning Commission, 420 W. Main, Ste. 910, Oklahoma City, Oklahoma, 73102, three days prior to the hour set for public hearing. The map on this Notice of Public Hearing, which depicts lots, blocks, streets and/or other details in the proposed Final Plat of Walden Creek, Section 4, is subject to possible amendments by the Oklahoma City Planning Commission at the referenced public hearing on the matter, and the plat actually approved by the Planning Commission at the public hearing may or may not contain the exact same lots, blocks, streets and/or other details shown on the MAP. All persons interested in presenting arguments and evidence for or against possible amendments to the proposed lots, blocks, streets and/or other details shown on the MAP should attend the referenced public hearing before the Oklahoma City Planning Commission and present such arguments and evidence at that time.

Should you have any further questions call 000-0000 (TDD 000-0000) between the hours of 8:00 a.m. and 5:00 p.m.

OKLAHOMA CITY PLANNING COMMISSION